



The Heritage

Manchester Unity Retirement Lifestyle

All Manchester Unity retirement villages provide residents with the very best in community facilities, modern accommodation and excellence in care. Residents decide how much support they require, while finding comfort in the knowledge that they have 24-hour care if needed – combining independence with peace of mind.

The Heritage of Hunters Hill

The Heritage is an exclusive development for the over 55's. Designed to offer an ideal mix of independence and privacy with community living, The Heritage is ideal for those looking for a secure, safe and worry-free retirement.

Your accommodation

The Heritage boasts 42 two and three bedroom apartments. All apartments are ideal for those accustomed to the very best and include:

- Lock up garages with remote controlled roller doors
- A balcony or courtyard area (except for two apartments in the Mary McKillop House)
- Emergency call pendants for personal use
- Access to cable TV
- Modern kitchens including Fisher & Paykel appliances
- Modern bathrooms
- Separate laundries
- Quality carpet
- Ducted air conditioning
- Smoke alarms, security and intercom systems

Location

The Heritage is set in the leafy surrounds of Sydney's prestigious peninsula suburb of Hunters Hill. Conveniently located only seven kilometres from the heart of Sydney with regular ferry and bus services into Sydney city, The Heritage offers a comfortable retirement lifestyle in one of the city's most affluent suburbs.

Find out more

To discover how living at The Heritage can provide you with the retirement you deserve, simply call Manchester Unity on 02 9817 5222 or to view a virtual tour of the village visit www.manchesterunity.com.au

Our facilities

- Dining room with attached kitchen
- Heritage lounge
- Library with TV and card tables
- Billiards room
- Workshop
- Outdoor seating in the landscaped gardens
- Outdoor BBQ area
- Visitor car parking

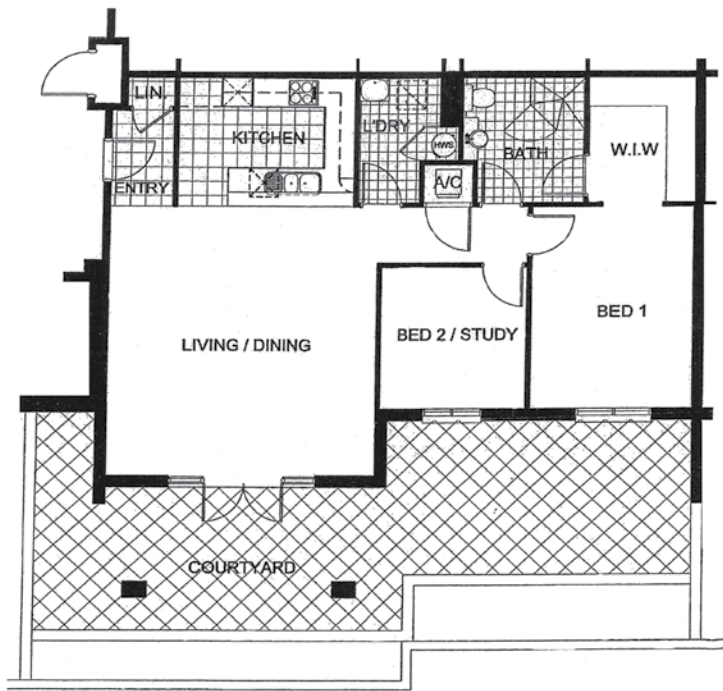
Our services

- Managers Office
- Village management
- Activities co-ordination
- Village bus for shopping/outings
- Maintenance/gardener
- Meal delivery to apartments
- Cleaner
- Evening support staff
- Hairdressers

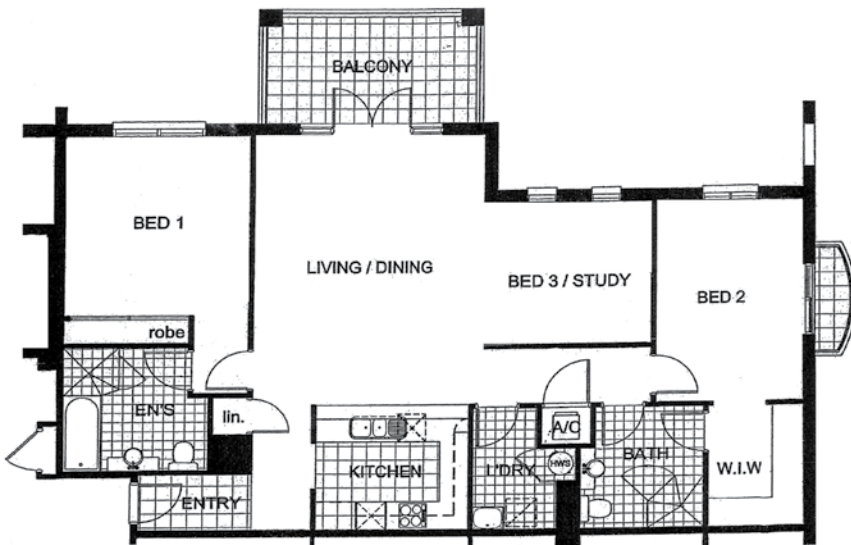


35 Gladesville Road, Hunters Hill

All information is effective from July 2010.



Building 2 - Part C/Ground level	
Two bedroom courtyard unit	
Area	Square metres
Net unit	91.1
Courtyard	58.7
	Dimensions metric
Living - dining	5445 x 5800
Bed 1	3260 x 4340 (+ dressing)
Bed 2	3000 x 3050
Kitchen	3615 x 2700
	Dimensions imperial
Living - dining	17' 10" x 19'
Bed 1	10' 8" x 14' (+ dressing)
Bed 2	9' 10" x 10'
Kitchen	11' 10" x 8'



Building 3 - Level 1	
Three bedroom balcony unit	
Area	Square metres
Net unit	115.4
Balcony	11.2
	Dimensions metric
Living - dining	4800 x 5790
Bed 1	3630 x 4440 (+ dressing)
Bed 2	3000 x 4340
Bed 3 / study	3390 x 3050
Kitchen	3210 x 2710
	Dimensions imperial
Living - dining	15' 9" x 19'
Bed 1	11' 11" x 14' 7" (+ dressing)
Bed 2	9' 10" x 14' 3"
Bed 3 / study	11' 1" x 10'
Kitchen	10' 6" x 8' 11"